



THE ILLINOIS SHEPHERD

Newsletter of the Illinois Sheep Industry

The Illinois Lamb & Wool Producers, & Illinois Sheep and Wool Marketing Board

www.illinoisssheep.net

Winter Issue

February 2012

Illinois Sheep Industry Day—March 24th

Inside this issue:

ISWMB Meeting	2
United Producers	2
ASI Annual Meeting	3
Make It With Wool	4
Kline Creek Shearing	5
DeKalb Lamb & Wool	6

Join the Illinois Lamb & Wool Producers for an informative program and annual meeting Saturday March, 24th. The event will be held at the University of Illinois, Champaign, IL in the animal science building room 131. Registration begins at 9am. The program includes helpful topics for all producers. The worming method FAMANCHA will be demonstrated. This method is a helpful management tool. Changes in today's market lambs will be the next topic. This will be discussed by Brad Angus, accomplished judge and market lamb producer. The next topic on the agenda is breaking a lamb carcass into primal cuts. This demonstration will be done in the University of Illinois meat lab. The program will be conclude with a presentation by the American Lamb Board and the American Sheep Industry. Bob Benson, regional director for ASI will discuss the ASI grow your flock program designed to increase the number of sheep in the US.

After the program, lunch will be

served. The annual meeting for the Illinois Lamb and Wool Producers will be held after lunch. All producers are encouraged to attend and give their ideas to assist the organization. The Illinois Sheep and Wool Marketing Board annual meeting will be held around 2:00 pm.

A membership drive is planned for the conference. Talk to your neighbor, bring a friend! This conference is an excellent way for new producers to meet others in the industry and get helpful information. At the meeting the ILWP will be introducing producers from through out the state who are serving as Mentors to other producers.

Registration is \$6 and includes lunch. For more information contact Richard Cobb at 217-333-7351 or Jane Zeien at 815-544-9582 or jzcci@aol.com.

The University of Illinois Animal Science building is located at 1207 West Gregory Dr., Champaign, IL.



Southern Illinois Sheep & Craft Festival

The Monroe County Sheep Producers Association announces the 26th Annual Southern Illinois Sheep and Craft Festival will be held April 14-15, 2011 at the Monroe County Fairgrounds in Waterloo, Illinois.

Planned activities include sessions by sheep specialists, judging contests, spinning and craft demonstrations, shearing demonstrations, sheep dog demonstrations, sheep Olympics, sheep pellet bingo, and others. Other family activities planned include kid's corner, performances by Thunder and Lightning cloggers and antique tractor

display by International Harvester Collector Club. Throughout the day there will be taste samples, cooking demos and vacuum-packaged cuts of lambs available to purchase. A special feature of the day will be a lamb lunch served from 11AM to 2PM, featuring various cuts of fresh locally grown lamb. Come out to the fairgrounds April 14th or 15th to try the lamb chops, leg of lamb, burgers and brats.

Commercial and other exhibits will display live sheep, equipment, feed and health products, sheep and wool craft items and others.

The program is open public Admission is free. For more information contact Richard Woodcock 618-939-8536 Morrie and Nancy Sanford 618-458-4545 George Thomas 618-458-7256 .The Monroe County Fairgrounds is located one-half mile west of Waterloo on State Road 156.

The Festival is a great family event. Bring your neighbors and introduce them to the excitement of sheep.

Richard Woodcock
E-mail: woodcock@htc.net
Phone: 618-939-8536

Illinois Lamb & Wool Producers

2011-2012 Officers

President

Elton Mau
31086E 1300N Rd.
Arrowsmith, IL 61722
309-825-5435

Vice President

Terry Becherer
2114 Rocky Ford Rd.
Trenton, IL 62293
618-224-9185

Secretary/Treasure

Anne Crider
32377 E. 750 North Rd
Arrowsmith, IL 61722
309-727-1154

Extension Sheep Specialist

Richard Cobb
University of Illinois
128 ASL 1207 W. Gregory
Urbana, IL 61801
217-333-7351

Executive Secretary

Jane Zeien
10828 Caledonia Rd.
Belvidere, IL 61008
815-544-1063
jzcci@aol.com

The Illinois Shepherd is the official publication of the Illinois Lamb & Wool Producers and The Illinois Wool & Sheep Marketing Board. It is published four times a year.

All Illinois Sheep breed and regional groups are encouraged to submit articles about their activities to the newsletter. Send all correspondence to Jane Zeien, Executive Secretary.

Breeders directory available upon request.

Annual Meeting IL Sheep & Wool Marketing Board

This is the official notification of the Annual Meeting of the Illinois Sheep & Wool Marketing Board of Directors to be held from 2:00 - 3:00 p.m. March 24, 2012 at University of Illinois Animal Science Building, Champaign, IL.

Requests for grants from the IL Sheep & Wool Marketing Board should be completed by March 15, 2012 and sent to the Executive Secretary's office.

The purpose of the ILSWMB grant program is to:

- Enable Illinois sheep and wool producers to coordinate more effectively the maintenance and development of markets for sheep and wool
- Provide for education about and

research concerning lamb and wool

- Develop increased demand for lamb and wool

- Compliment and amplify the promotional efforts of the American Sheep Industry.

Requests exceeding must have a representative at the ISWMB Board meeting in which it will be reviewed to present the request and answer questions. Once the grant is awarded, a report detailing the event and a financial accounting of the grant money is required to be completed after the event is held.

Questions and requests for grant forms should be directed to Jane Zeien, 815-544-9582, jzcci@aol.com

United Producers Scholarship Opportunity

Columbus, OH -

United Producers Inc. (UPI) is excited to support the future generation of agriculture through a new scholarship opportunity.

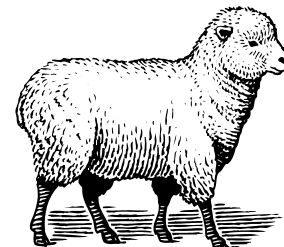
UPI is offering one \$1000 scholarship in each of its 16 districts to deserving high school students pursuing agriculture degrees.

"The future of agriculture depends highly on those who are currently considering and pursuing a career in this critical industry," said Dennis Bolling, President and CEO, United Producers Inc. "We want to do all we can to encourage students who have an interest in agribusiness, farming, veterinary medicine or other agriculture-based industries to pursue their careers, and this is our way of helping them do so."

Applicants must be a Preferred Member of UPI or a child of a Preferred Member, a graduating high school senior, and enrolled in a college or technical school studying an agriculture-related field. Completed applications and essays must be postmarked by April 1, 2012.

Visit www.uproducers.com for more information and to download an application form. Contact Abra Dunn at 614-433-2176.

United Producers Inc. serves more than 35,000 livestock producers in the Midwest United States. UPI offers livestock marketing services to farmer members, along with risk management and financial services. United Producers is a farmer-owned cooperative headquartered in Columbus, Ohio. For more information visit www.uproducers.com.



Illinois Sheep & Wool
Marketing Board
2011-2012 Directors

District 1

Barb Hintzsche
3951 S. Mulford Rd.
Rochelle, IL 61068
815-561-5538

District 2

Harold Davis
23951 N 1900 East
Odell, IL 60460
815-998-2472

District 3

Gene McGrew
907 E Twyman St
Bushnell, IL 61422
309-772-3213

District 4

Helen Hettinger
655 County Rd 1675 E
Eureka, IL 61530
309-467-3809

District 5

Kirby Ballard
Rt. 1
Box 57A
Carrollton, IL 62016
217-942-9946

District 6

Ray Mohr - chairman
5941 Old Peoria Rd.
Danvers, IL 61732
310-963-6392

District 7**Executive Secretary**

Jane Zeien
10828 Caledonia Rd.
Belvidere, IL 61008
815-544-1063
jzcci@aol.com

ASI Annual Convention

Denver, Colo. -- The best lamb, wool and pelt markets in a generation of producers fueled the productive meetings during the 2012 American Sheep Industry Association (ASI) Convention held in Scottsdale, Ariz., Jan. 25-28. The meetings, held under the "Grow Our Flock" banner, brought together more than 400 sheep farmers, ranchers, lamb feeders, processors, mills and wool warehousemen from 42 states.

"The great attitude of our industry is very evident," stated Margaret Soulen Hinson (Idaho), ASI president. "Every segment and organization affiliated with the sheep business is located here under one roof providing for great networking opportunities. An understanding of each sector's issues from gate to plate and from farm to fabric is promoted with this industry-wide convention."

One of the more obvious successes emphasized during the three-day meeting was the interest and commitment of the American wool-sock industry to buy American wool, which is being credited to the buy American movement and to the reintroduction of the superwash process into the United States through ASI programs. Production on the shrink-resistant treatment equipment line began in 2011 and alters the fiber in wool products, allowing them to be washed and dried without shrinking. This is the most reliable, shrink-resistant treatment for wool available on the market. Additional commercial textile and knitting firms in the United States have purchased U.S. top and wool because they can buy domestic wool and have the entire process completed in America. It also allows products to be sold to the Department of Defense as all-American made with shorter lead times in getting precuts, reduced freight costs and an opportunity to buy smaller quantities. As Robert Chesebro, president of Wigwam Mills Inc., put it, "Before the superwash process was re-introduced into the United States last year, American wool top had to be shipped to China (7,227 miles) to be treated, then to England (5,070 miles) and finally to South Carolina (4,094) before it could be manufactured into socks." Superwash has opened new markets and created more demand for American wool," said Diego Paullier, Chargeurs Wool USA

A successful wool program could provide millions of dollars in new revenue and outlets for sheep producers across the country and help ensure the United States maintains a domestic wool processing industry.

The inaugural meeting of the Emerging Entrepreneurs Committee was hailed a success. The program, designed to bring relevance to the day-to-day operations of sheep producers between the ages of 25 and 40, touted attendees from 11 states with many of them being first-time attendees to this annual meeting. Through interactive presentations, issues such as "money matters," the impact of the animal rights movement on livestock producers, identifying new markets, sheep and land usage and options for other revenue streams were presented and discussed. This group is the future leadership of the industry and will have a large impact on the industries direction in years to come. We challenged each person to not only come back next year but to bring someone new with them. It was exciting to be a part of this energetic and motivated group of younger producers," said John Cubiburu, co-chair of this committee. "This activity was also a great fit with the Let's Grow initiative that ASI launched in 2011 to increase wool production by two million pounds with an increase of 300,000 lambs annually to meet growing demand. The campaign is two-fold -- to attract new producers of sheep and to encourage existing producers to expand. The www.growourflock.org website showcased the campaign support materials for budgets, production management efficiencies and the advantages of sheep production for all interested in the sheep industry. A media campaign focused in six states last fall generated nearly a hundred local, state and regional print, radio and television articles on the sheep industry and was described by sheep industry leaders as the largest media blitz in over a decade.

The new sheep industry mentor program was promoted during the convention highlighting the \$75,000 already approved for state sheep producer association work with newer producers.

Illinois Make It with Wool Contest

Submitted by Marilyn Donoho

The 2011 Illinois Make It With Wool Contest was held on October 1, 2011 with 15 participants at the PARC facility in Peoria, IL. The Central Illinois Chapter of the American Sewing Guild hosted the competition with the "STYLE SHOW" being conducted during their luncheon.

The MIWW competition was held during the morning in the four age categories; Pre-Teen, Juniors, Seniors and Adults. Each participant, just for entering the competition, received a length of wool from Pendleton Woolen Mills and a gift bag with various items within, complements of the Illinois MIWW.

2011 was the 50th year of this competition for Illinois. A specially designed magnet was given to all who attended the event.

A display of garments from previous years MIWW competitions was enjoyed by all. Of note was the district winner and then first state winner for Illinois in December, 1961, with competition held at Urbana, was Marilyn (Hoffman) Donoho. There was a display of the actual winning garment and adornments with accompanying photos and prize listings. Marilyn placed third at the National MIWW competition in Salt Lake City, Utah, for the Senior Category in January, 1962.

A further note on the displayed garments was the 1986 Illinois 25th Year Make It With Wool Senior division winner, Marilyn Donoho's daughter, Anita Donoho-Ott. She placed fourth at Nationals. Like mother, like daughter.

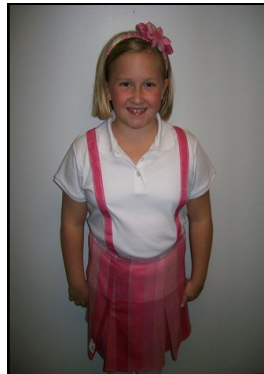
2011 Illinois MIWW winners are as follows; (1) Pre-Teen division winner, Reagan Parks, Bloomington, IL., (2) Junior division winner, Cameron Parks, Bloomington, IL., (3) Senior division winner, Emily Parks, Bloomington, IL., (4) Adult division winner, Patricia Schmidt, Peoria, IL. The Junior and Senior winners receive a trip to the "Nationals" in Scottsdale, AZ., in January 2012. The Adult winner

will forward her garments to Spearfish, SD. for National competition with a video showing her wearing the garment.

Runner Ups were; (1) Pre-teen, Noa Greenfield, Elgin, IL., (2) Junior, Rebecca Roby, Sycamore, IL., (3) Senior, Alexandria Swenson, Libertyville, IL (4) Adult, Jeanette Bussard, Geneva, IL.

Judges were Susan Smith (the 2010 Adult National winner), of Burnettsville, IN., Barbara Hanson of Metamora, IL., Carol Dorward of Washington, IL., and Dr.

Chang OK Choi from Bradley University, Washington, IL. The judges had a very difficult job selecting the winners with such good quality entries.



ALB Grant Program

As a reminder, the American Lamb Board's second round of funding for their two cooperative funding programs is just around the corner.

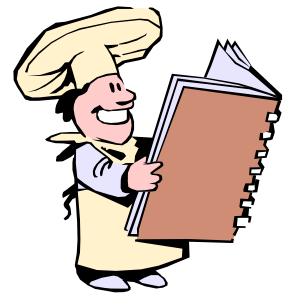
Applications for both the Supplier Cooperative Funding Program and the Matching Grant Program will be due April 30, 2012.

The Supplier Cooperative Funding Program is designed for suppliers to help fund branded retail or food-service promotions, and the Industry Matching Grant program is designed for other industry organizations and partners to help fund local promotions such as festivals, cooking demonstrations and more. ALB established both programs to expand projects and activities that promote American Lamb and further the goals and objectives of the American Lamb Board's strategic plan. Both programs require a one-to-one cash match from the recipient.

Visit lambcheckoff.com to download the applications, or please contact Rae Maestas if you have questions or need further information: (866) 327-5262.

Spicy American Lamb Chili

2 tablespoons olive oil
 1 medium onion, diced
 1 pound lean ground American Lamb
 3 cloves garlic, minced
 1 teaspoon red pepper flakes
 1 teaspoon dried oregano
 1 teaspoon cumin
 1/2 teaspoon allspice
 1/4 teaspoon cinnamon
 4 tablespoons chili powder
 1 bay leaf
 1 can diced tomatoes with juice (14-1/2 ounces)
 3 cups canned kidney beans, rinsed and drained
 Salt and pepper
 Dry Jack cheese, for garnish
 Chopped onion, for garnish



In a large, heavy-bottomed stock pot, heat olive oil; cook onions and ground lamb over medium heat. When onions are soft and meat browned; drain well. Add garlic and season with red pepper flakes, oregano, cumin, allspice, cinnamon, chili powder, bay leaf, and salt and pepper to taste. Sauté for 1 to 2 minutes. Add tomatoes and beans; bring soup to a boil. Reduce heat, simmer for 15 minutes. Ladle into bowls and garnish with toppings.

Kline Creek Annual Shearing Day

Kline Creek Historical Farm will be holding their annual shearing days April 21-22. The event begins at 10am and goes till 4 pm. There will be shearing demonstrations throughout the day. Spinning wool to yarn will also be demonstrated. Border collies will be showing their amazing talent with the sheep.

Kline Creek is a living history farm located in DuPage County. Step back in time to the 1890's and experience what life was like. The farm is also home to Angus and Shorthorn cattle as well as Percheron horses and numerous chickens. The farm house and buildings maintain the 1890's style and fixtures.

A blacksmith shop is also on the farm. The whole family will enjoy a day at Kline Creek.

Kline Creek Farm is located at 1N600 County Farm Rd., West Chicago, IL 60185.

The phone number is 630-876-5900. or you can visit the website for more information:

www.dupageforest.org.

For Sale

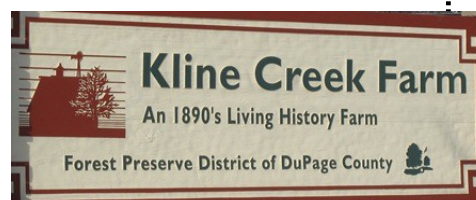
4 Ketchum

Big Hay

Bale Feeders

Contact Terry Becherer

618-224-9185



Shawnee Sheep Producers—Upcoming events

The Shawnee Sheep producers have a new website for producers. Please visit www.shawneesheepproducers.org.

Upcoming events for Spring 2012:

Shawnee Sheep Producers
Spring 2012 Meeting
Saturday March 17th 9am-12
Union County Fairgrounds, Anna
Attendance is free for the program.
Lunch will be served (\$5.00) and
there is an educational program in
addition to a short business meet-
ing.

Shawnee Sheep Producers
Shearing Day
Saturday April 28, 2012
Union County Fairgrounds, Anna
8:30 am—11:30 am

Richard Woodcock and his team of shearers will be available to shear. Call Carl Dillow in advance at 618-833-3515 to let him know how many sheep you are bringing. Cost is \$5.00 per head plus a \$5.00 set up cost per flock for SSP members. The cost for nonmembers is \$7.00 per head and a \$7.00 per flock charge. Wool bags will be available to purchase if you need them. You must be available to help with your sheep.

Shawnee Wool Pool
Friday June 8, 2012
5:00 pm—7:00 pm
Union County Fairgrounds, Anna
Wool gathered at the wool pool will be sold to Mid-States Wool Coop again this year. If you cannot bring wool on date of pool, call Carl

Dillow to arrange getting it to him before the date. Book your shearer early. Available shearer is Richard Woodcock 618-939-8536.

Other sheep events include the 5th annual FFA consignment Auction. This will be held March 31st at the Union County Fairgrounds. Bring your livestock, equipment, animals, tools, tractors, vehicles or anything else you have. All of the auction commission will be donated to the FFA chapter of your choice.



DeKalb County Lamb & Wool Producers 36th Annual Meeting

Submitted by Mike Hart

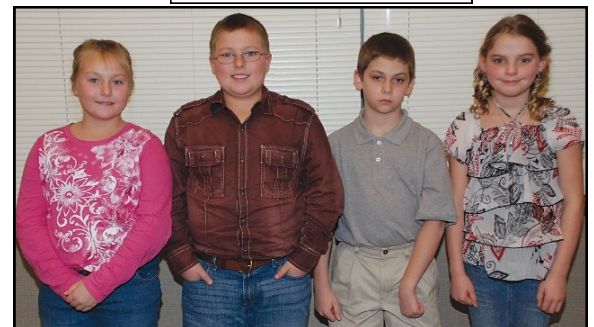
33 DeKalb County Lamb & Wool members and families attended the 36th annual meeting held in the DeKalb County Farm Bureau Center for Agriculture auditorium on Saturday, January 14th. A Lamb Chop meal was prepared and served by 5 B's Catering, Waterman. All those members attending brought a favorite dessert dish to pass and enjoy. President Allen Dietz, Clare, presided over the annual meeting and a Silent Auction was held following the business meeting. Three L&W Board Members were elected for three year terms: Mark Johnson, Sandwich, Adrian Plapp, Malta Jared Poynter, Sycamore. During the business meeting, Richard Cobb, retired University of Illinois Extension Sheep Specialist, discussed his thoughts on the future of the sheep industry in Illinois and the Midwest. He also pointed out the top 10 sheep stories of 2011 and the economic climate affecting the industry.

Dick and Florence Getzelman, Hinckley, were recipients of the 2011 Distinguished Service Award. The Getzelmans have raised Cheviot sheep and been strong supporters of the Lamb & wool industries for many years. President Allen Dietz announced and recognized this year's four Youth Sheep Scholarship recipients: Allie & Tyler Drake, Clare; Eleacia Danko, Malta; and Dakota Petersen, Kirkland. The DeKalb County Lamb & Wool Producers board is providing up to \$200 for each scholarship recipi-



President Al Dietz presents award to Dick Getzelman.

(L to R) 2012 Youth Sheep Scholarship recipients: Allie & Tyler Drake, Clare; Dakota Petersen, Kirkland; and Eleacia Danko, Malta,



2012 ILLINOIS LAMB & WOOL -DUES

NAME _____ PHONE _____

EMAIL _____

ADDRESS _____

CITY/STATE/ZIP _____

WHAT BREED(S) DO YOU RAISE _____

NUMBER OF BROOD EWES _____

ILLINOIS LAMB AND & WOOL PRODUCERS 2012 Dues	\$20.00
ADDITIONAL AMERICAN SHEEP INDUSTRY 2012 Dues	\$25.00
TOTAL FEE	\$45.00

Make check to ILWP and mail to:
10828 Caledonia Rd, Belvidere, IL 61008.

Want fair prices for your lambs?

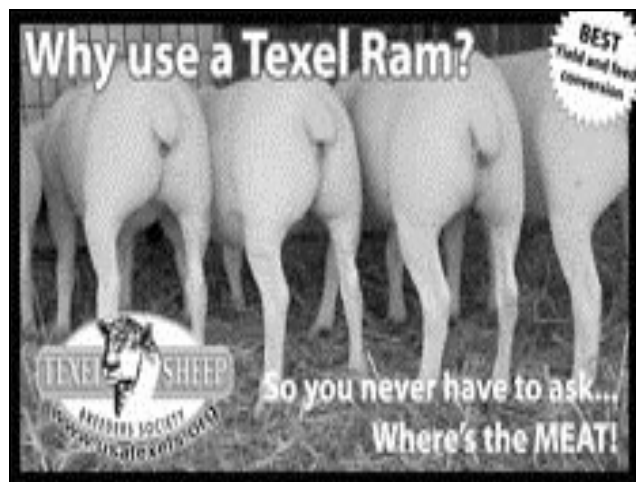
Market your lambs through our Raymond and Goreville Lamb Pools. Visit our website for dates.

United Producers, Inc.

There's Value in Belonging

800-456-3276
www.uproducers.com

United Producers Inc. is a market-leading provider of livestock marketing, financial and risk management services.



Green Pastures
Fiber Cooperative

Broadening your horizons and supporting your efforts...that is what the Illinois Green Pastures Fiber Co-Op is here to do. Give us a call or check out the website to learn more about the exciting opportunities ahead for your farm!

www.illinoisgreenpastures.org

Increase the Value of Your Fiber

illinois
Wool and Fiber Mill

- ◆ Turn Your Raw Fiber to Roving or Yarn
- ◆ Naturally Processed
- ◆ Full Service Mill
- ◆ Individual attention given to each and every fleece
- ◆ Custom Blending available
- ◆ No Minimums

Illinois Wool and Fiber Mill Inc.
10828 Caledonia Road
Belvidere, IL 61008
Contact Jane for Details @
815.544.9582

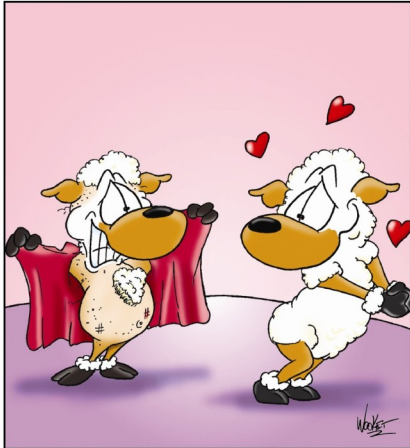
jane@ilwoolfibermill.com

Visit our Website
www.ilwoolfibermill.com

The Illinois Lamb & Wool Producers, &

Jane Zeien
Executive Secretary
10828 Caledonia Rd.
Belvidere, IL 61008
jzcci@aol.com
815-544-1063

A Herd of LAUGHTER.



Shear Love

©2008 Terry Wockett Willis. All Rights Reserved (www.wocket.com)

Calendar of Events

2012 CALENDAR

March 24, 2012	Illinois Sheep Industry Barn Tour and Annual Meeting— Champaign, IL
March 24, 2012	Illinois Sheep & Wool Marketing Board Annual Meeting
April 1, 2012	United Producers Scholarship applications due
April 6-7, 2012	IL All Breeds Spring Sale—Bloomington, IL
April 6-7, 2012	National Dorset Sale and show- Bloomington, IL
April 14-15, 2012	Southern Illinois Sheep & Craft Festival—Waterloo, IL
April 28, 2012	Shawnee Sheep Producers Shearing Day-Anna, IL 9:30 am
June 8-9, 2012	Monroe County Sheep Producers Wool Pool-Monroe County Fairgrounds
June 8, 2012	Shawnee Sheep Producers Wool Pool-Anna, IL
June 22-23, 2012	National Shropshire, North Country Cheviot and Romney Sale and Show- Springfield , IL

Try These
Web Sites

www.sheepusa.org www.lambchef.com
www.americanlamb.com